

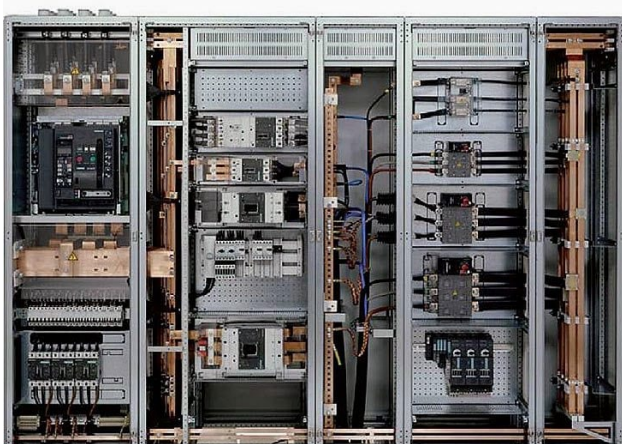
### Product Overview

PTSenR PTSPS075 have ability to comprehensively monitor multiple data, such as conductor temperature and joint temperature measurement, etc. In view of this, we developed a low-pressure cabinet temperature sensor, which gathers temperature and humidity information at the electric termination node and sends it to the background via the data receiving terminal, so that real-time temperature monitoring and real-time temperature warning can be given for the low-voltage switchboard cabinet.



### Application

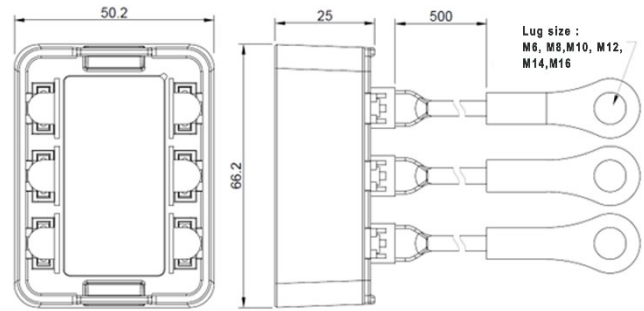
PTSPS075 provides 7 x 24 x 365 continuous temperature monitoring of various electric equipment like circuit breaker, MCC drawer, motor, tap-off unit and LV transformer termination.



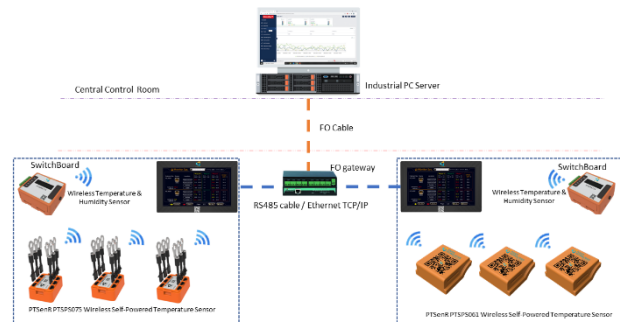
### Features

- 6 individual cables sensor
- Plug & play with built-in quick connect terminal blocks
- Linearise & conditions input signals to temperature values
- No external power
- Continuous 24x 7 temperature monitoring
- Installed INSIDE electrical switchboards
- Accurate
- Lifetime calibrated
- Fast + easy installation
- Secure direct to the various size lugs
- Detects faults before fail
- Easy integration

### Dimensions (Unit: mm, tolerance: ±1%)



### The System Architecture



### Specification

Power supply input voltage	AC220 ~794
Energy Harvesting	<50µA
Accuracy	±1°C
Temperature	-4°C ~ 125°C
Temperature measurement	Direct contact type
Measurement interval	1 sensor – 5seconds, 6 sensors – 30seconds
Transmission interval	50 seconds ~ 310 seconds
Wireless operating bandwidth	433Mhz (Zigbee)
Transmission power	10dBm
Transmission distance	≤500m (open air), 0.4~20m (enclose)
Protection level (IP)	IP4X
Flame retardant grade	V0 (700°C 30sec)
Withstand voltage	2.5kV
Impulse withstand voltage	Uimp = 8kV

Miscellaneous	
Cable sensor host dimension	50.2 x 66.2 x 25 (mm)
Cable length	50cm, 100cm
Weight	207gram
Operation Temperature	-40°C ~ 85°C
Relative Humidity (RH)	≤95%RH (non-condensing)
Storage Temperature	-10°C ~ 75°C
Mounting method	Magnetic, rail, binding
Certification	CE – EN 61000-6-2:2005+AC; 2014/35/EU LOW VOLTAGE DIRECTIVE; 2014/30/EU ELECTROMAGNETIC COMPATIBILITY DIRECTIVE EN 61000-6-4:2007+A1:2011; EN 62366-1:2014+A11:2017

Ordering Information	
Part Number	Product Description
PTSPS075	PTSenR Cable Sensor Host
PTSPS075M6-5	PTSenR Cable Probe, M6:50cm
PTSPS075M8-5	PTSenR Cable Probe, M8:50cm
PTSPS075M10-5	PTSenR Cable Probe, M10:50cm
PTSPS075M12-5	PTSenR Cable Probe, M12:50cm
PTSPS075M14-5	PTSenR Cable Probe, M14:50cm
PTSPS075M16-5	PTSenR Cable Probe, M16:50cm
PTSPS075M6-10	PTSenR Cable Probe, M6:100cm
PTSPS075M8-10	PTSenR Cable Probe, M8:100cm
PTSPS075M10-10	PTSenR Cable Probe, M10:100cm
PTSPS075M12-10	PTSenR Cable Probe, M12:100cm
PTSPS075M14-10	PTSenR Cable Probe, M14:100cm
PTSPS075M16-10	PTSenR Cable Probe, M16:100cm