

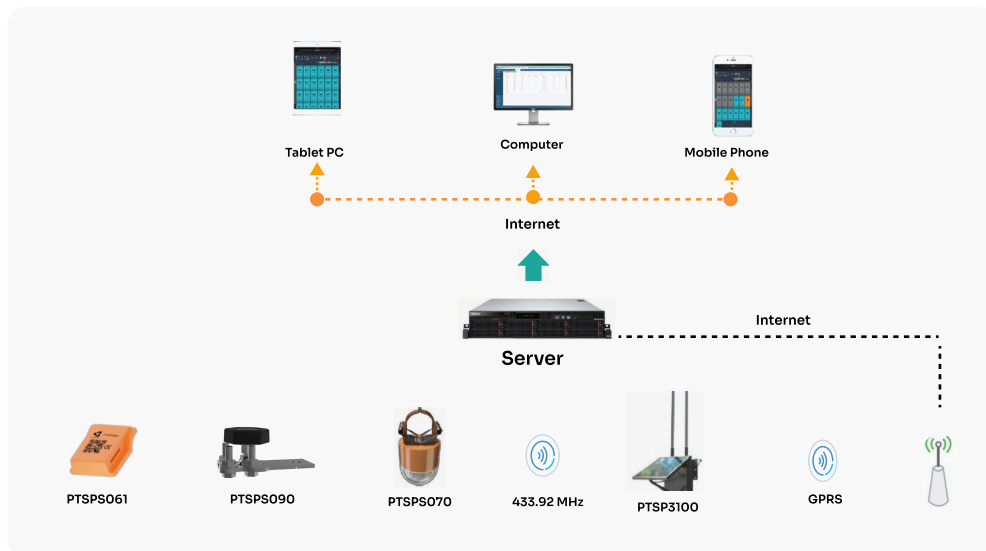
PTSPW3100 Solar Powered Tower Gateway

Product Overview

The PTSenR™ PTSPW3100 function of the solar powered tower gateway station: passive wireless temperature sensor installation, outdoor tower installation, solar energy reception followed by direct sunlight, data reception, solar energy storage management, GPRS forwarding and power management. The above functions are combined to complete a self-circulating system.

The housing is rated IP65 for protection against dust and water. The station can operate in temperatures from -45°C to 85°C and humidity ranging from 10% to 95% (non-condensing).

System Architecture



Applications

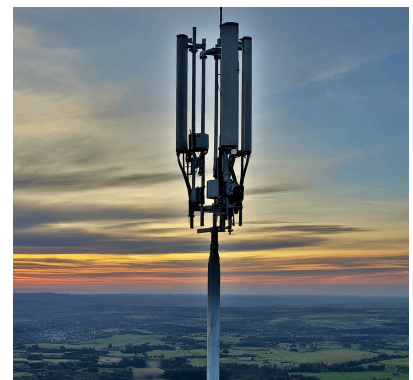
Outdoor tower installation



Data Reception

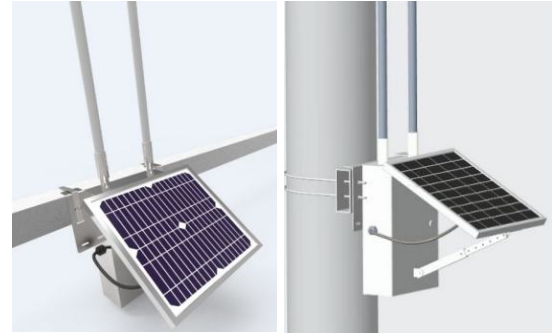


GPRS Forwarding



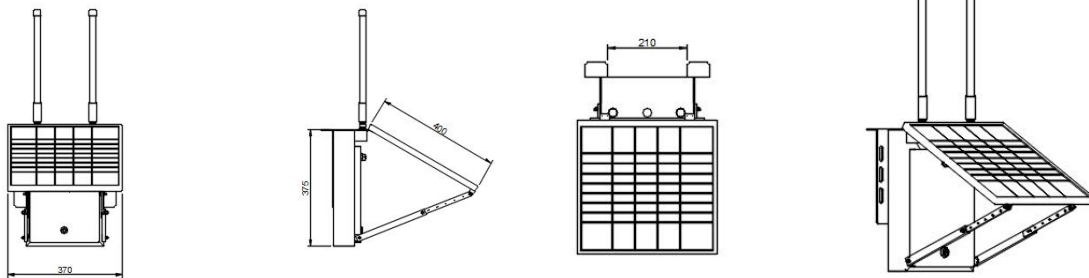
Characteristics

The PTSenR™ PTSPW3100 features wireless transmission, eliminating the need for complex wiring. The station is highly reliable, meeting EMC protection standards for demanding conditions. Security is a priority, with a proprietary chip safeguarding the distribution terminal. It's versatile, powered by both solar energy and a battery, and offers flexible installation options.



Dimensions

(Unit: mm)



Specifications

Operation Supply	Solar Powered with Battery
Communication	GPRS
Operating Current	600 mA
Power Consumptions	<1 W
Energy Storage	Lithium Battery
Solar Panel Power	20 W
Solar Panel Voltage	18 V
Wireless Operating Bandwidth...	433.92 MHz
RF Maximum Receiving Sensitivity	-110 dBm @ 1 Kbps
Protection Level	IP 65
Weight	5 Kgs
Relative Humidity	10% RH to 95% RH (Non-condensing)
Operating Temperature	-45°C ~ 85°C

Temperature Measuring Range	-45°C ~ 85°C
Installation	Bracket Fixed
Compliance	EN 62479; EN 61326; EN 220, 300, 301, 400, 489

Ordering Information

Part Number	Product Description
PTSP3100	PTSenR™ Solar Powered Tower Gateway